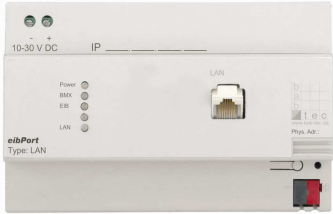


Typ: LAN



Connecting EIB/KNX with the world of Ethernet

Art.-Nr.: 10103

also for Powernet-available



HomeInformationCenter

With iPod/iPhone or other smart phones managing EIB/KNX facility, multimedia or have a look at your home via IP-camera? No problem with HIC.

b.a.b.-technologie GmbH
Inhouse Dortmund
Rosemeyerstraße 14
44139 Dortmund

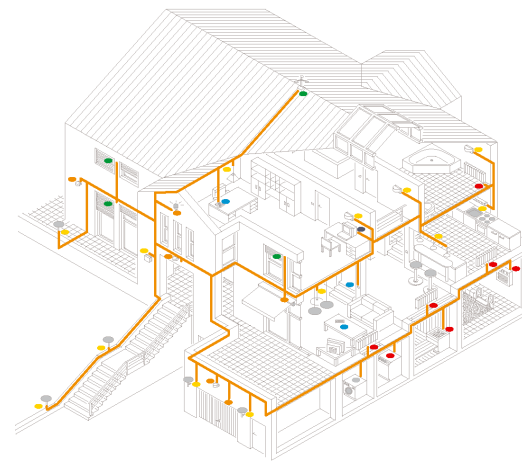
Telefon: 0049 231 – 476 425 30
Telefax: 0049 23 1 – 476 425 59

Internet: www.bab-tec.de
E-Mail: info@bab-tec.de

Room allocation plan

With the new room allocation plan rooms can be connected with a profile over a certain period. These profiles (e.g. present, absent) contain, analogue to a light scene, a preset for the actors to be steered (lighting, heating, shutter etc.). Application area: room allocation plan for schools, hotels, offices, tennis center- or sports hall and so on.

überall Zuhause

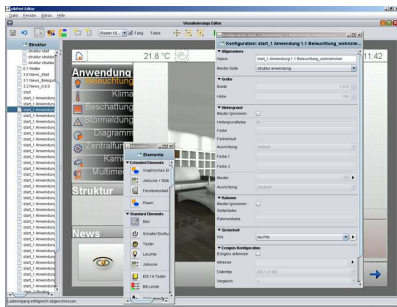


*... the new Editor
Raise up your visualisation*

That isn't all...keep yourself informed over the internet: www.bab-tec.de .

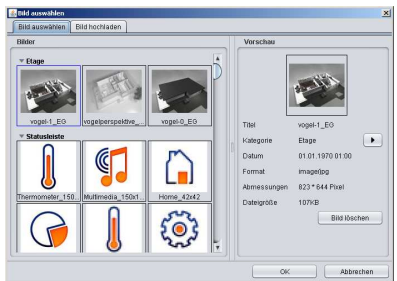
eibPort
EIB Gateway

b
a
b
tec
www.bab-tec.de



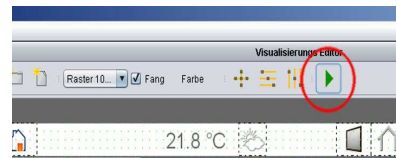
Clear-edit with 2 monitors

The visualisation-elements are not longer in the toolbar, they now positioned in a list at the left side. The position of the project overview and the configuration menu stayed at their old place. These three windows could be uncoupled from the main window (by a click on the task bar) and can be placed anywhere on the monitor. So you are able to use 2 monitors which made this job much more clearly arranged.



Save time—the upload

Until now pictures, esf-data and free components must be loaded via the ConfigTool into eibPort before they were available (after a new start) in the editor. These functions are now implemented in the editor and the new Elements can be used directly. Now it is also possible to edit esf-data (virtual group addresses). For background pictures a preview available or they can be placed with drag and drop directly into the editor.

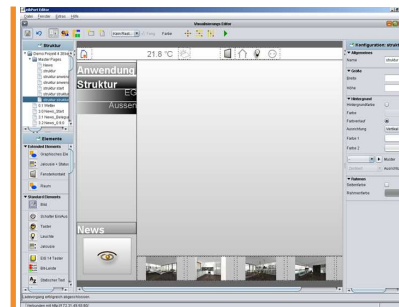


Live—the simulation mode

The visualisation editor contains a live mode. The editor works in the same manner as the visualisation its self Functions can be proofed without leaving the editor. Changing between editor and visualisation is not needed anymore. This speed up time. Functions like grid, arrange, layer a.s.o. are integrated in the toolbar witch make positioning of elements much more easier.

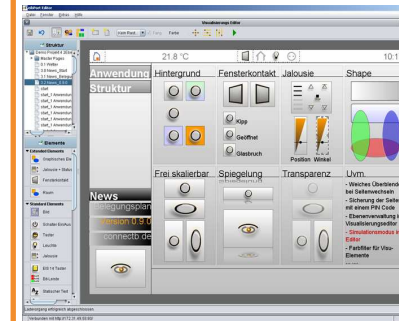
Faster customized

Master pages and the style configuration allows (for example) to create a menu for the whole project, instead of creating it new on every visualisation page. The function „colour filter“ changes the color of all elements in the standard library in every other desired colour. Also it is possible to make the background of the elements transparent, or with horizontal or vertical color gradien. Also new: Paging with crossfade, pagelog with PIN code, Visu-Toolbar.....



New elements and features

All elements of the library have gotten a lot of new features. The size is now free scalable. Also transparency and the body structure is selectable. The layer administration allows a define positioning of the elements. A new graphic element (rectangle/circle) can be configured. To this elements multiple actions can be assigned, as jump to an URL, change PIN Code, page chronic (skip/back), HTTP Request etc.



With the new picture element external pictures can be embedded into the visualisation. This could be a actual weather map from the internet cicely refreshed. or a big High-Quality photo from the harddisk of the visualisation PC. Further new elements.: shutter with position indicator, window contact (4 positions), Slider. Re-engineering of busmonitor (filtering, export), RSS Feed (easier to find), camera, and graph (automatic refresh), EIS 15 display.

